



Combining the strength of steel and the natural beauty of timber, Retain-iT makes it easy to construct walls up to three sleepers high

- Easy installation
- No fasteners required
- Heavily galvanised steel

Proudly Australian Designed & Patented

Turn over for our simple 3-step guide

easy as **1-2-3**

## Product Selection Guide

Available in three heights to suit 50mm and 75mm sleeper depths

**1**

**SLEEPER HEIGHT**  
200mm wall, 450mm post

**2**

**SLEEPER HEIGHT**  
400mm wall, 750mm post

**3**

**SLEEPER HEIGHT**  
600mm wall, 1100mm post

### SLEEPER HEIGHT



#### Joiner Post

#### Corner Post

#### End Post

	50mm		75mm		50mm		75mm	
<b>450mm Post</b> 1 sleeper height	16041	16241	16042	16242	16043	16243		
<b>750mm Post</b> 2 sleeper height	16071	16271	16072	16272	16073	16273		
<b>1100mm Post</b> 3 sleeper height	16111	16311	16112	16312	16113	16313		

## For garden beds and lighter duty applications



Corner Sleeper Stake  
16001

Sleeper Stake  
16002

Corner Retaining Stake  
16011

Retaining Stake  
16012

### Safety

Wear appropriate hand and eye protection when working with concrete and cutting timber.



## What you'll need

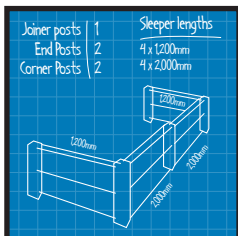
### Materials

- Retain-iT posts
- Quick setting concrete
- Timber sleepers

### Tools

- Measuring tape
- Level & string line
- Shovel or post-hole digger

## Step 1



### Handy Tip

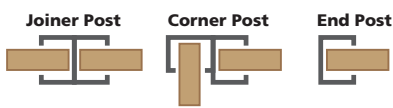
Designed with 15° tolerance, so you can create 'curved' walls at special angles

## Design and plan

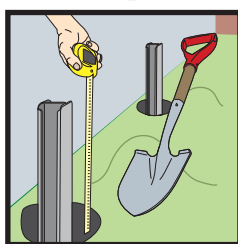
Measure your planned space, and design the layout of your retaining wall on paper. Remember to include the heights.

Determine the post sections and number of posts required by referring to the Product Selection Guide.

### Top-down view



## Step 2



### Handy Tip

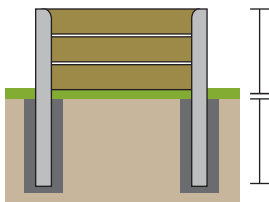
Concrete one post at a time adding sleepers as you go to ensure a straight wall

## Prepare the site

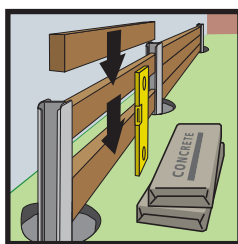
Clear the area and mark out the run of your wall and the position of your posts.

Dig holes for each post, and double check that your sleepers will fit snugly.

For stability, the posts should be approximately halfway below ground and half-way above. Walls with shallow foundations will be less stable.



## Step 3



### Handy Tip

For a different finish, add a layer of timber capping to the top of the wall.

## Build and concrete

Use a level and string line to ensure posts are straight and upright.

Pour concrete to set the post at the correct height and spacing – a quick-setting concrete is recommended.

Insert your timber sleepers and move on to the next post until your retaining wall is complete.

**The galvanised steel is suitable for use with quick-setting or regular concrete.**

### Please note:

Information in this document is a guide only and we do not warrant the accuracy or the completeness of that information. Whites Group excludes all liability in relation to the statements in this brochure. Australian Design Registered components.

