

e-beam⁺ [F17], the only F17 substitute that's **true blue.**



JD3 rated for greater
connection strength



H2S termite treated



Distinctive blue colour
makes it easy to spot in
the warehouse or on site



Made in Australia



PRODUCT CERTIFIED



JAS-ANZ



e-beam⁺ 
[F17]

wesbeam.com

e-beam+ [F17] is JD3 rated – which means it's engineered to grip tightly.

Wesbeam e-beam+ [F17] is the only softwood LVL available in Australia which has a JD3 rating.

The JD – or joint group – rating is defined by Australian Standard AS1720.1 and the Building Code of Australia. It's basically the ability of wood fibres to hold onto a nail, screw or bolt. The scale goes from 6 to 1; and the lower the JD number, the stronger the wood.

Nail plate manufacturers give their products a tooth group rating. This indicates the ability of wood to hold onto a nail plate tooth.

JD and tooth group ratings aren't the same, but they're very closely related. A piece of LVL or timber with a better JD rating will almost always have a better tooth group rating.

The JD3 rating of e-beam+ [F17] means Wesbeam can provide **the most cost-effective high load-bearing chord for Australian frame and truss manufacturers.**

Smaller – and cheaper – nailplates

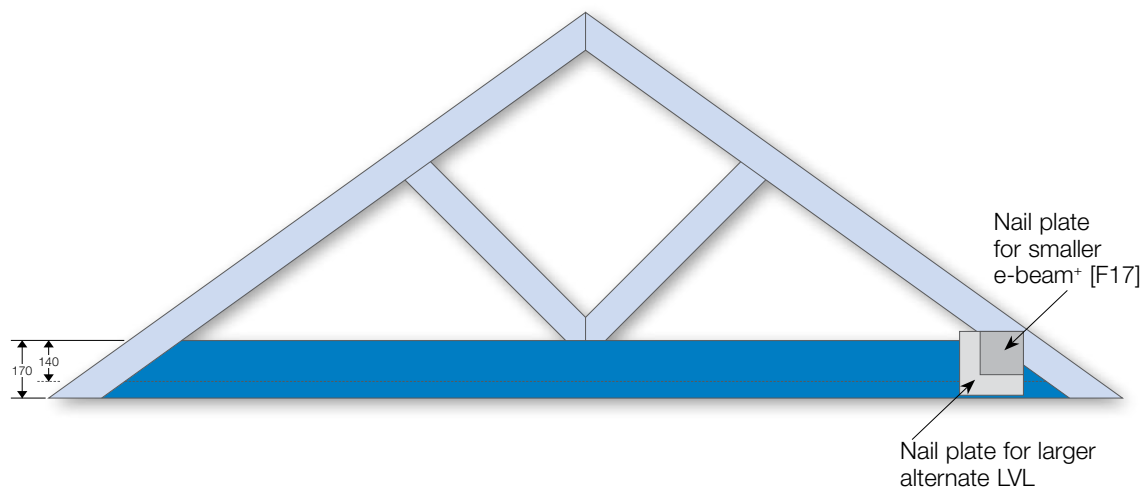
e-beam+[F17] has a stronger grip on nail plate teeth than any other softwood LVL sold in Australia. So it needs fewer nail plate teeth to achieve the same connection strength.

This means you can use **smaller, less expensive nail plates.**

Smaller bottom chords

Bigger nail plates may require a deeper, and therefore more expensive, bottom chord. Smaller nail plates allow you to use smaller – and cheaper – bottom chords which are easier to pre-camber and position in a G press.

e-beam+[F17] uses smaller nail plates for a more cost-effective bottom chord.



e-beam+ [F17] matches F17 section sizes

e-beam+[F17] is available in the same section sizes as F17 hardwood (90, 120, 140, 170, 190, 240mm) so frame & truss manufacturers can use shallower bottom chords to achieve the same result as traditional LVL section sizes. This can save up to almost seven percent in material costs.

e-beam+ (mm)	Standard LVL (mm)	% saving
120	130	7.7%
140	150	6.7%
190	200	5.0%

Lower cost connection brackets

e-beam+[F17] with its JD3 rating has a greater ability to grip a nail, screw or bolt. So it achieves the same connection strength with a smaller – and cheaper – connection bracket.

With connection brackets ranging in price from \$2 to \$60, using smaller brackets can deliver substantial savings. For example, a girder truss with an 11 metre span has up to 8 standard trusses connected to it – so using 8 smaller connectors will save up to \$50 per job.

Inferior LVLs may need larger bolted connectors to achieve the required connection strength. These brackets are 2.5 times the cost of the next bracket size down and are twice as labour-intensive to install.



Nailed Hanger



Screwed Bracket



Higher-load screwed bracket



Hi-load bolted bracket

The savings soon add up.

The combined savings to a frame and truss manufacturer using e-beam+ [F17] quickly add up

- Smaller, less expensive nail plates
- Shallower, less expensive bottom chords
- Smaller – and cheaper – connection brackets
- Lower labour costs

In typical examples, these savings add up to between \$40 to \$80 – which is the same as saving between \$50 to \$150 per m³ in the cost of bottom chord material.

e-beam+ [F17] is loaded with other benefits

- **Engineered.** Being an engineered product, e-beam+ [F17] is free of gum pockets and strength reducing knots. Being an engineered product e-beam+ [F17] does not require nailplated splicing to achieve longer lengths and, unlike F17 hardwood, each piece is engineered to be highly consistent in the way it deflects under load
- **Termite treated.** H2S treated e-beam+ [F17] is coloured blue and untreated e-beam+ [F17] is coloured orange to clearly show the level of treatment, both in the yard and on site
- **Software support.** e-beam+ [F17] is included in Wesbeam's e-house software, Hyne Design7 and in all major F&T software packages
- **Length.** e-beam+ [F17] is available in from 3.6m to 13.2m
- **Australian made.** Wesbeam is the only Australian manufacturer of LVL
- **Chain of Custody.** All Wesbeam products come with Chain of Custody certification complying with AS4707 – Australian Forestry Standard and Program for the Endorsement of Forest Certification (www.pefc.org)
- **EWPA.** Wesbeam is a member of the Engineered Wood Products Association of Australia and e-beam+ [F17] is a **EWPA certified** product.

e-beam+[F17] Pack Sizes

Depth (mm)	Thickness (mm)	Pieces per Pack
90	35	65
120	35	45
140	35	40
170	35	35
190	35	30
240	35	25



When used in dry protected structural applications



When used south of the Tropic of Capricorn

190 Pederick Road
Neerabup WA 6031
Australia

PO Box 217
Wanneroo WA 6946
Australia

T (08) 9306 0400
F (08) 9306 0444

wesbeam@wesbeam.com
www.wesbeam.com



© Wesbeam Pty Limited ABN 89 004 268 017
WESB0026 / Date of publication February 2014